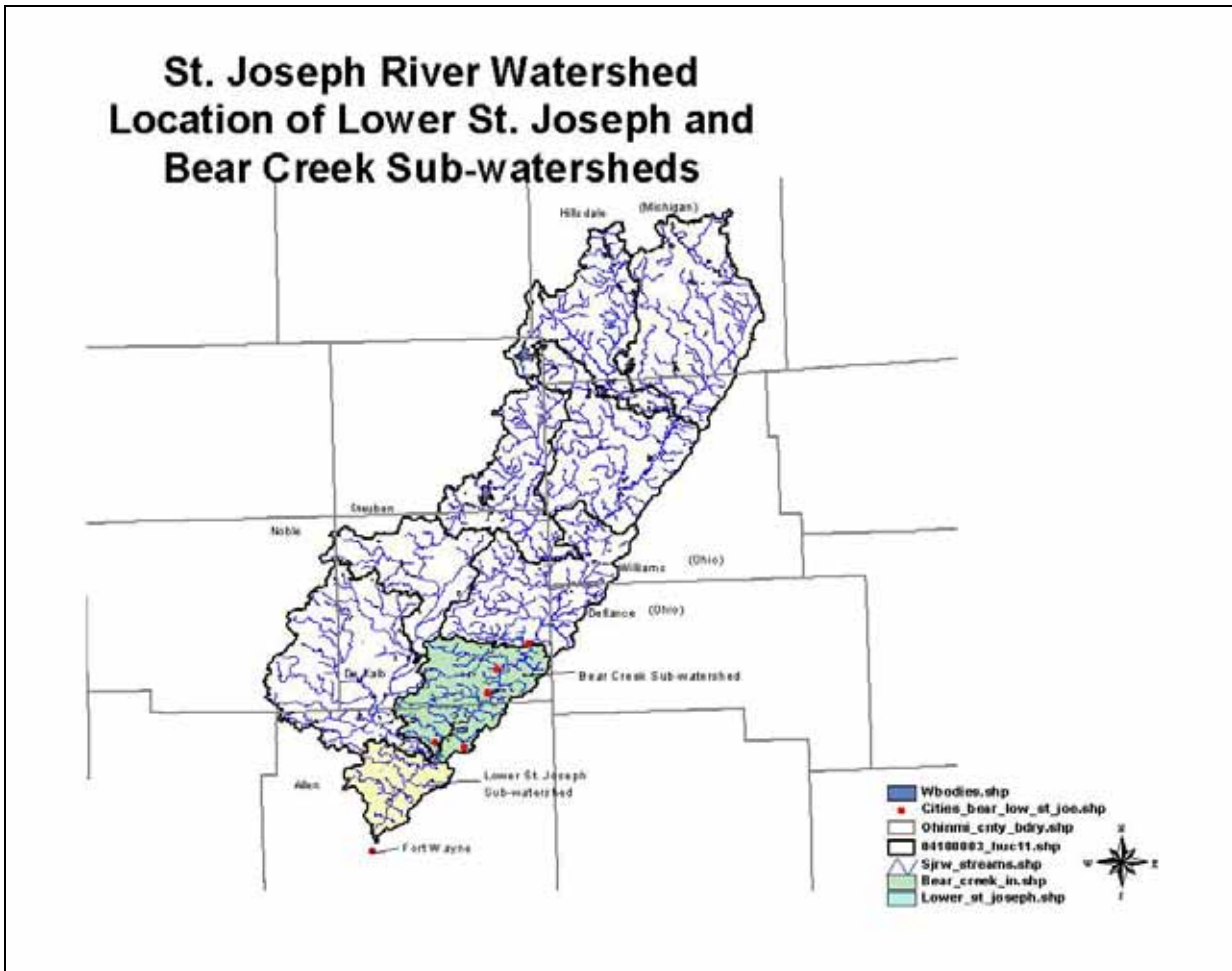


A call to Action: What can your neighborhood do?

- River Clean-up Days ☼ Volunteer water monitoring ☼ Storm drain marking
- Riverside beautification efforts ☼ Erosion reduction ☼
- Rain garden demonstrations ☼ Native plant & landscaping workshops ☼
- Awareness Projects: Lawn & garden chemical pollution ☼ Pet-waste
- ☼ (Home) Car wash runoff ☼ Watershed education
- ☼ National Drinking Water Week (May) ☼
- National water quality monitoring day (October) ☼ Earth Day (April)



St. Joseph River	HUC	04100003	(8 digit)
Lower St. Joseph River watershed	HUC	04100003100	(11 digit)
Bear Creek watershed	HUC	04100003070	(11 digit)

St. Joseph River Watershed Initiative
 3718 New Vision Drive Fort Wayne, IN 46845
 260-484-5848 x120 Fax 260-484-5080 www.sjrwi.org

Our Mission:
 To develop partnerships to promote economical and environmentally compatible land uses
 that improve water quality in the St. Joseph River Watershed.

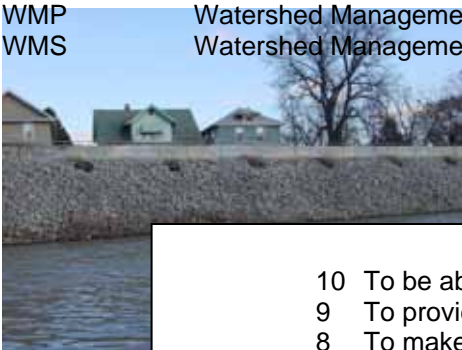
Important reasons to protect the St. Joseph River and its tributaries:

- 1 Source of drinking water for Fort Wayne and New Haven
- 2 Drainage & irrigation
- 3 Ground water recharge
- 4 Aesthetics
- 5 Recreation
- 6 Industry & commerce
- 7 Agriculture
- 8 Aquatic/wildlife habitat
- 9 Transportation
- 10 Clean Receiving waters (discharge)



Environmental Alphabet Soup

ARS	Agricultural Research Service; part of USDA
CES	Cooperative Extension Service
CWA	Clean Water Act
EPA	Environmental Protection Agency
Groundwater	Underground water sources; occurs in aquifers
HUC	Hydrologic Unit Code. A way of cataloguing portions of the landscape according to their drainage
IDEM	Indiana Department of Environmental Management
IDNR	Indiana Department of Natural Resources
ISDA	Indiana Department of Agriculture
NFP	Not-for-profit (organization)
NGO	Non-governmental organization
NPS	Non-point source pollution. Widespread & diffuse, not from a single point or pipe
NRCS	Natural Resource Conservation Service (Part of USDA)
Point source	(pollution) Identifiable source or location of pollution, end of a pipe
SDWA	Safe Drinking Water Act
SJRWI	St. Joseph River Watershed Initiative
Stakeholders	Anyone who lives, works, recreates, or has other interest in the watershed area.
Steering Committee	Small group of stakeholders that helps to guide the watershed management process
SWPI	Source Water Protection Initiative
SWCD	Soil & Water Conservation District
TMDL	Total Maximum Daily Load – the amount of pollution a water body can absorb without violating water quality standards
TNC	The Nature Conservancy
USDA	U.S. Department of Agriculture
USFS	U.S. Forest Service
USFWS	U.S. Fish & Wildlife Service
USGS	U.S. Geological Survey
Watershed	All of the landscape that drains to a specific point (surface water body)
WMP	Watershed Management Plan
WMS	Watershed Management Section (IDEM)



Top 10 reasons for developing a watershed plan:

- 10 To be able to use grant funds to leverage existing programs
- 9 To provide the partners with a tangible success story
- 8 To make it easier to obtain grant funds
- 7 To empower the local community to create change
- 6 To enable the community to get additional agency support
- 5 To provide a way to track progress with measurable results
- 4 To help the project grow bigger and last longer
- 3 To inform the community, and market the project to new partners
- 2 To record the group's decisions; and
- #1 To improve the quality of life for people in the watershed by helping ensure clean water and healthy natural resources!**

Indiana Watershed Planning Guide, IDEM, Office of Watershed Management Section, 2003